



## 2019 Venue Sound System Specs

---

### **STAGE :**

21' wide, 12' deep; 29.5" high. 3 step staircase upstage left takes up 4' x 5' of the stage space. **Note:** Downstage SR & SL 3'x3' corners are directly under flown Mains & have 4' height clearance.

Otherwise, vertical clearance is 16'.

Deck: 3.5" thick incl 1" gypsum & 1" LD soundboard.

### **POWER :**

(3) 20 amp circuit on stage (independent from discrete circs for mains/mons/subs/FOH/Lights). Add'l 100 amp camlock 4-wire single phase syst w/ Neutral/Ground rev'd (turnarounds on site for these) for touring lights or 220 Euro.

### **FOH :**

Midas Verona V400 40 ch console

40ch Split snake w/ (4) 12ch sub snakes

4 monitor sends / 3 effects sends / 1 subwoofer send

#### **Mains :**

4 Meyer Sound CQ2 Mains (plus 2 balcony fills)

1 Meyer Sound 700HP dual 18' Sub

#### **Processing :**

Ashly Protea 3.6 Speaker Processor

Main + Monitors EQ Ashly GQX3102 + additional Monitor EQ - Ashly MQX2310

#### **Compressors :**

Universal Audio LA3A (2) - single channel

BSS DPR404 - 4 channels

BSS DPR 402 (2) - 2 channel

Drawmer DL24 - 2 channels  
DBX 160X (2) - single channel  
DBX 1066 XL (3) - 2 channels  
DBX 1074 (2) - 4 channels gate

**FX UNITS :**

TC Electronics M One Multi Effects Unit  
TC Electronics M2000 Multi Effects Delay Unit  
TC Electronics D Two Delay Unit

**MONITORS :**

(4) Fulcrum F12 Passive powered by Ashly NXP4004 Power Amp  
(1) DB Technology DVX D15 drum wedge (active)  
(2) Mackie SRM450 Active two way speakers  
(1) Mackie SRS1500 Active 15 inch Subwoofer  
(2) Mackie c300i Passive two way speakers  
(1) Mackie PPM406M Powered Mixer  
(1) DB Technologies M12-4  
(2) Wharfdale EVP-X15M - and (1) Wharfdale EVP-X12M Active two way speaker - monitor

**D.I. BOXES :**

(6) Radial JDI - Passive Direct Box  
(1) Radial Duplex Stereo Direct Box  
(1) Radial J48 - Active Direct Box  
(1) Radial Pro D1  
(2) LR Baggs - Active Direct Box  
(1) Horizon Straightline - Passive Direct

**MICROPHONES :**

(7) Shure SM58 Handheld Dynamic Vocal  
(1) Shure Beta 58 Handheld Dynamic Vocal  
(4) Shure SM57  
(1) Shure Beta 52

- (1) Shure 518SA
- (1) Shure Beta 91
- (2) Audix OM2 Handheld Dynamic Vocal
- (1) Audix OM3 Handheld Dynamic Vocal
- (1) Audix OM3XB Handheld Dynamic Vocal
- (4) Audix OM5 Handheld Dynamic Vocal
- (3) Audix OM6 Handheld Dynamic Vocal
- (2) Audix VX5 Handheld Condenser Mic
- (6) Audix D2 Dynamic Mic (Black Top)
- (3) Audix D3 Dynamic Mic (Gold Top)
- (1) Audix D4 Dynamic Mic (Red Top)
- (2) Audix D6 Dynamic Mic (Low Freq)
- (4) Audix I5 Dynamic Mic
- (3) Audix ADX51 Small Diaph Condenser
- (1) AKG D112
- (2) Sennheiser MD421 Dynamic
- (2) Sennheiser E609 Dynamic
- (2) Neuman KMS105 Handheld Condenser

## **Lighting / AV :**

### **FOH:**

ChamSys QuickQ 20 Light Board

### **Downstage:**

- (2) 4 Channel Dimmer Pack - Leviton D4DMX-MD3
- (4) PR Lighting XLED 3007 - 7Wx20 RGBW Moving Head Wash
- (6) Ellipsoidal - 750W
- (1) 20" Mirror Ball with (2) Pinspots
- (1) ADJ-M2020 - Variable Speed and Rotation Mirror Ball Motor

### **Upstage:**

- (6) Elation Opti QA Par - 18Wx5 RGBA Wash
- (2) Par 56
- (1) 4 Channel Dimmer Pack - Elation DP-415

### **Video:**

- (1) Panasonic DLP PT-RZ570B - with HDMI, VGA and composite inputs.
- (1) 9' H X 12' W Projector Screen

## **DJ Equipment**

1x Technics SL-1200MK2

1x Technics SL-1200MD3

1x Numark M3 2-Channel DJ Mixer

1x 48x20" DJ Table

## **RECORDING AUDIO** (BY PERMISSION ONLY):

Tascam X48 Multi-track HD recorder hardwired to Midas direct outs. ART MPA 2 ch Tube preamp w/ pair of Neumann KM184's for room mics.



**MISSISSIPPI STUDIOS**  
 LIGHTING PATCH AND FIXTURE SCHEDULE  
 UPDATED : 4.6.19

HOUSE LIGHTING CONTACT  
 Owen Walz | 646.465.2735  
 owenwalz@gmail.com

Fixture Number	Fixture Type	Address		Options / Notes	Wattage	Mode	# Ch.	Location
		U.	#					
1	Altman 360Q 6x16	1	1	Color: R119	575w	( Dimmer )	1	FOH Pipe
2	Altman 360Q 6x9	1	2	Color: R119	575w	( Dimmer )	1	FOH Pipe
3	Altman 360Q 6x9	1	3	Color: R119	575w	( Dimmer )	1	FOH Pipe
4	Altman 360Q 6x9	1	4	Color: R119	575w	( Dimmer )	1	FOH Pipe
5	Altman 360Q 6x9	1	5	Color: R119	575w	( Dimmer )	1	FOH Pipe
6	Altman 360Q 6x16	1	6	Color: R119	575w	( Dimmer )	1	FOH Pipe
7	ADJ Pinspot	1	7	N/A	30w	( Dimmer )	1	Wall HR
8	ADJ Pinspot	1	8	N/A	30w	( Dimmer )	1	Under Balcony HL
9	Lamps & Drums	1	9	N/A	N/A	( Dimmer )	1	US Balcony
10	PAR 56	1	10	Lamp: WFL	500w	( Dimmer )	1	
11	PAR 56	1	10	Lamp: WFL	500w	( Dimmer )	1	
201	PR XLED 3007	1	118	N/A	200w	Standard	18	FOH Pipe
202	PR XLED 3007	1	136	N/A	200w	Standard	18	FOH Pipe
203	PR XLED 3007	1	154	N/A	200w	Standard	18	FOH Pipe
204	PR XLED 3007	1	172	N/A	200w	Standard	18	FOH Pipe
301	Elation Opti QA PAR	1	17	N/A	140w	7 Channel	7	USR High Pipe
302	Elation Opti QA PAR	1	24	N/A	140w	7 Channel	7	USR High Pipe
303	Elation Opti QA PAR	1	31	N/A	140w	7 Channel	7	USL High Pipe
304	Elation Opti QA PAR	1	38	N/A	140w	7 Channel	7	USL High Pipe
305	Elation Opti QA PAR	1	45	N/A	140w	7 Channel	7	USL High Pipe
306	Elation Opti QA PAR	1	52	N/A	140w	7 Channel	7	USL High Pipe
901	ADJ Mirror Ball DMX II	1	400	N/A		Dimmer   Rotation	2	FOH Pipe
911	Chauvet Radius 2.0	1	11	N/A	52w	Macro   Rotation   Strobe	3	FOH Pipe



# MISSISSIPPI STUDIOS

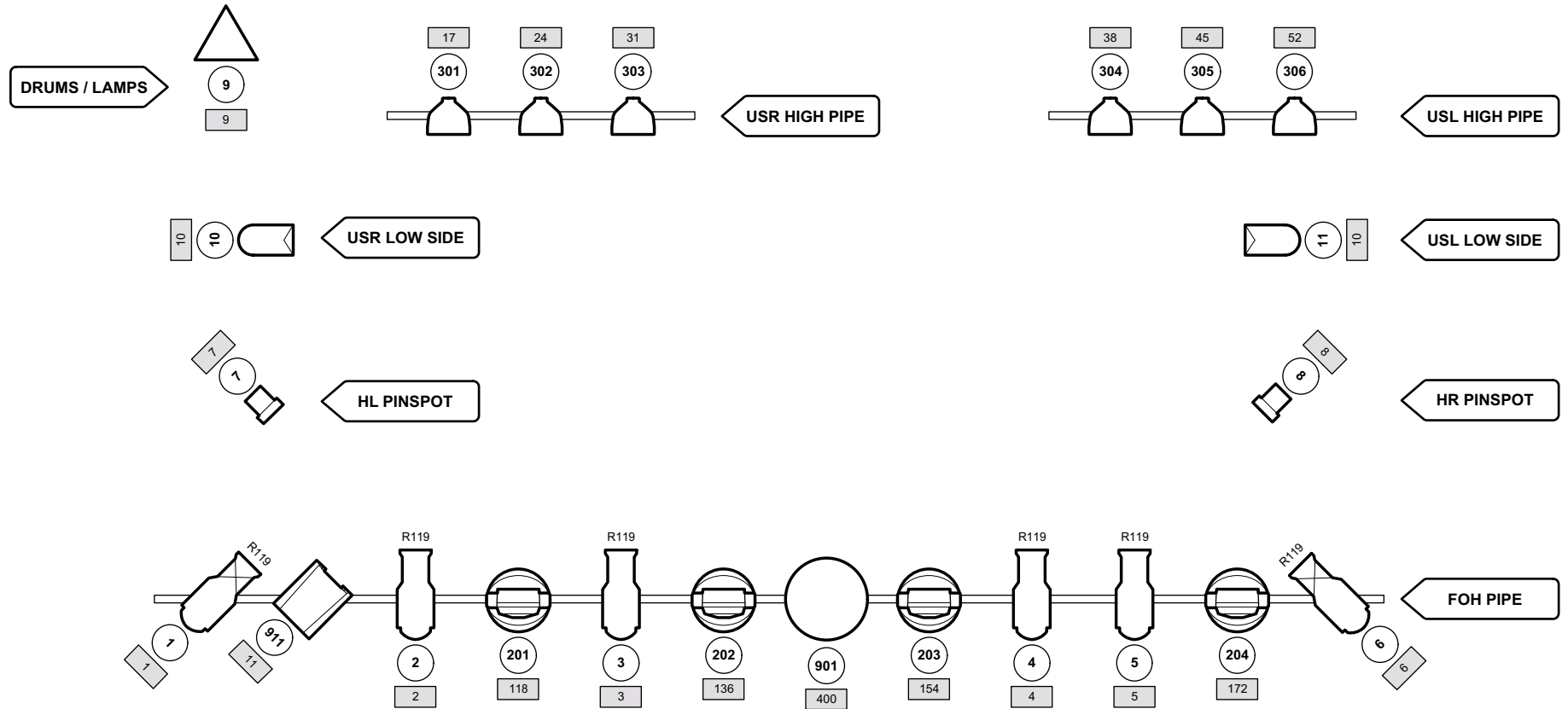
3939 N. MISSISSIPPI AVE  
PORTLAND OR 97227

# LIGHT PLOT

UPDATED: 5 / 11 / 19  
SCALE: 3/8" = 1'-0"

# HOUSE LIGHTING CONTACT

Owen Walz | (646) 465-2735  
owenwalz@gmail.com



\*\*POSITIONS NOT DRAWN IN PLACE

## LEGEND



## KEY

